



Evacuation Solutions

Manufactured and Distributed by

VIMPEX
Shaping Alarm Technology



The **UK's leading** independent manufacturer and distributor of Fire Alarm and Evacuation products and accessories.



Established in 1994, VimpeX is the UK's leading independent manufacturer and distributor of Fire Alarm and Evacuation products and accessories. We produce and distribute a range of high quality Evacuation, Signalling and Building Infrastructure System products, both VimpeX-manufactured and supplied by our manufacturing partners.

From our very own range of products including Identifire, Fire-Cryer, Hydrosense and Smart+Guard to our supply of trusted partner products such as Hosiden Besson, Signaline, Geofire. We're committed to offering our customers excellent technical support and customer service, as well as fast and effective distribution and delivery.

The majority of our products are customisable and at VimpeX we are pleased to offer hassle-free branding and own-labelling and OEM services so you can make our products your own.

VimpeX's brands

VIMPEX



hydrosense™

IDENTIFIRE 

SMART+GUARD

FIRE  **CRYER®**

Ani  **Mate®**

VOICE SOUNDERS

Fire-Cryer Voice Enhanced Sounders use voice technology proven to reduce delay and response rate in evacuation times, therefore significantly increasing safety. Fire-Cryer can be used as a single message 24 V dc conventional voice sounder on any sounder/ notification alarm circuit or as part of a sophisticated multi-message, multilingual evacuation system.

Multiple message broadcasting is also available including evacuation, coded or lock-down messages, general safety or security alerts. Foreign language and bespoke messages are also available.

Use of a high-quality rocking armature capsule technology means high sound levels, excellent intelligibility and broadcast of a clear, unambiguous message.



EN 54-3



FIRE-CRYER® PLUS

FEATURES

- Can be used on standard sounder circuits or NACs
- Fully approved to EN 54 Part 3
- Optional integral VID strobe
- Sound output - 100 dB(A)
- Multilingual messages available
- Fully synchronised
- 7 Messages, switchable via Voice Controllers

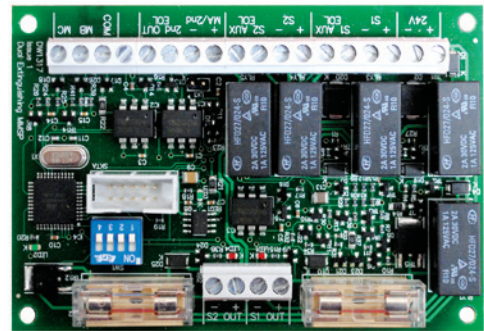


MINI FIRE-CRYER® PLUS

FEATURES

- Ultra-slim base sounder to fit industry-standard detectors
- Sound output - 90 dB(A)
- Omni-directional sound output
- Fully synchronised

EN 54-3



FIRE-CRYER® EXTINGUISHANT PCB

Use Fire-Cryer on gas suppression systems, allowing all states of alarm to be broadcast through a single Fire-Cryer Voice Sounder.

FEATURES

- Seamless Integration with gas extinguishant panels
- Reduced wiring cost
- A single Fire-Cryer will broadcast all stages of extinguishant alert
- Significant increase in worker safety



MESSAGE CONTROLLERS

Interfaces allow conventional sounder circuits/NACs to be used to broadcast 7 different messages via multi-message Fire-Cryers.

FEATURES

- Allows upgrade of sounder circuits/NACs to multi-message voice capability
- All sounders and strobes fully synchronised
- Provides for 'phased' and 'staged' evacuation
- Any state of alarm can be broadcast
- Available as PCB only or boxed with power supplies



FIRE-CRYER® SOLO

A simple Fire-Cryer with selectable messages for sites requiring basic voice enhanced evacuation.

FEATURES

- Simple single message sounder
- Can be multilingual
- Same performance as Fire-Cryer Plus
- Optional Integrated VID strobe



MAXI and MIDI FIRE-CRYER® PLUS

High-powered voice sounders designed for environments such as industrial applications and large open spaces like warehouses and factories.

FEATURES

- Sound output (MAXI) 101 to 116 dB(A)
Sound output (MIDI) 94 to 110 dB(A)
- Rugged and waterproof enclosures IP67 (MAXI) and IP66 (MIDI) (KP)
- Low current - average 100 mA
- Ideally suited for open areas and noisy environments



FIRE

IDENTIFIRE

Identifire products provide the Fire Alarm and Evacuation sector with a range of evacuation and alarm sounders, beacons and system accessories with a common form factor and a consistent look and feel.

The only such group of products providing the ability to both flush or surface mount across the entire range. This installation flexibility is unique.

An extensive product range with one form factor with over 50 product variations based around 9 core products:

- Identifire TriTone Sounder
- Identifire TriTone with VID
- Identifire MultiTone Base Sounder
- Identifire VID Beacon
- Identifire Remote Lamp Unit
- Identifire Remote Lamp Buzzer Unit
- Identifire Mains Isolator Switch
- Identifire Auxiliary Relay
- Identifire System Connection Box



CUSTOMISED YOUR WAY

All Identifire products can be 'pad printed' to allow for identification of system components and functions. Any language can be accommodated and full colour logos can be incorporated, meaning that system houses can easily be supplied with customised and OEM solutions when required. At VimpeX, we are pleased to offer hassle-free branding, own-labelling and OEM services so you can make our products your own.



2 WIRE COMPATIBILITY

2 Wire systems provide advantages to both the installer and the building owner as it reduces the amount of cabling required to be installed and therefore provides cost savings for both materials and installation cost.

The VimpeX Identifire products have been designed to accommodate standard fire alarm installations as well as 2 Wire systems providing installers a common Audio / Visual product platform irrespective of the type of system they are installing.



**2 Wire
Compatible**



IDENTIFIRE TRITONE SOUNDER

A simple sander with a great story. Able to be flush or surface mounted with no effect on performance. Available in red or white, TriTone can be customised with customers' logos or other text.

FEATURES

- Approved to EN 54 Part 3
- 92 dB(A) - 96 dB(A)
- 6 mA current consumption
- Low profile and subtle design popular with architects
- Suitable for use on 2 wire systems

EN 54-3



IDENTIFIRE TRITONE WITH VID

Our VID design is superior in performance with very bright LEDs and consistent performance across lens colours. If a VAD is not required, use of our TriTone with VID (visual indicator device) will mean that the beacon is clearly visible when required.

FEATURES

- Sounder approved to EN 54 Part 3
- Very bright VID beacon
- Combines sounder and VID beacon in one unit
- Flush or surface mounted
- Suitable for use on 2 wire systems

Available lens colours



EN 54-3



IDENTIFIRE VID

High quality LEDs to provide a beacon/strobe suitable for all general signalling and ancillary fire signalling. Available in red, amber, clear, blue and green lenses.

FEATURES

- Very bright VID beacon
- Ideal for many general signalling applications
- Can be grid mounted for industrial applications
- Five different lens colours available
- Suitable for use on 2 wire systems



Available lens colours



IDENTIFIRE MULTITONE BASE SOUNDER

For installations that require sounders to mount beneath detector bases, the Identifire range has the solution. With 32 selectable tones, our Base Sounder can also be configured to match the three tones available in the Identifire TriTone range.

FEATURES

- Approved to EN 54 Part 3
- Low profile design for detector base use
- Can be matched to the Identifire TriTone tones
- 32 selectable tones for consistency on site with other products
- Suitable for use on 2 wire systems

EN 54-3





IDENTIFIRE REMOTE LAMP UNIT

A bright LED indicator for use on both conventional and addressable alarm systems. Can be flush or surface mounted.

FEATURES

- Very bright, visual LED
- Available with both red and blue LEDs
- Suitable for use on both conventional and addressable alarm systems
- Can be printed with any text in any language
- Suitable for use on 2 wire systems



IDENTIFIRE REMOTE LAMP BUZZER UNIT

With the same features as our Remote Lamp Unit with the addition of an internal buzzer.

FEATURES

- Subtle local alarm
- Audible/Visual indication of alarm
- Ideal for nurse stations, theatres and building control offices
- Can be printed with any text in any language
- Suitable for use on 2 wire systems



IDENTIFIRE MAINS ISOLATOR SWITCH

As recommended in BS5839-1 and applied as best practice world-wide, our Mains Isolator Switch is consistent with the rest of the Identifire range. Mains isolators are often installed in dark or restricted areas. A bright status LED is therefore vital.

FEATURES

- Rated at a true 8 Amp switch rating
- Key can be removed in any state
- '901' durable and proven engineers key switch
- Bright LEDs for clear status signal in dark environments



IDENTIFIRE AUXILIARY RELAY

Used to provide an output to third-party components or system ancillaries, such as a power supply, to ensure activation/deactivation during alarm situation.

FEATURES

- 8 Amp rating
- Dual pole - live and negative both isolated
- Consistent with the entire Identifire range
- Can be flush or surface mounted



IDENTIFIRE SYSTEM CONNECTION BOX

High quality and sturdy connection box enabling installers and specifiers to match system wiring junctions with other Identifire products.

FEATURES

- Consistent Identifire design
- Can be printed for easy identification
- Can be surface or flush mounted
- Suitable for use on 2 wire systems





SOUNDERS, BELLS & VISUAL ALARM DEVICES

Vimpex's core capability is in the design, manufacture and distribution of evacuation alarm equipment and alarm ancillaries. As the exclusive distributor for Hosiden Besson's series of Banshee Excel products, we offer ex-stock supply, worldwide of these high quality and trusted products.



BANSHEE EXCEL™

The most established and trusted of all Multi-Tone Fire Sounders, the Banshee Excel continues to be seen as the benchmark for quality and performance. Available as sounder or sounder with VID, the Banshee Excel is the go-to choice for fire system designers wishing to specify products with the highest levels of performance, reliability and with premium third party approvals.



EN 54-3



FEATURES

- Third party approved by LPCB to EN 54 Part 3
- Highest quality and premium performance
- Available with mounting accessories for external applications
- Three body colours available - red, white and grey
- Excellent acoustics and consistent sound output
- Five different coloured lenses available

BANSHEE EXCEL™ FLASHDOME

Features ultra-efficient LEDs for bright light output and consistent performance.

FEATURES

- Ultra-efficient LED
- Very low current consumption
- Sleek, low-profile design
- Compatible with other Excel sounders and sounder/beacons and accessories





FIRE ALARM BELLS

The fire alarm bell is the traditional way to signal fire. Due to the broad sound frequency content of a natural ringing tone, the bell is still arguably the most effective tone-only fire alarm device. This LPCB-approved range of fire bells boasts high sound output and very low power consumption.

FEATURES

- Very low current consumption
- Excellent sonorous tone - up to 100 dB(A)
- Dedicated weatherproof versions
- 24 V bells certified by LPCB to EN 54 Part 3



EN 54-3



STROBELL COMBINATION UNIT

Manufactured by VimpeX in the UK - this unique combined bell and beacon is an innovative way to combine the benefits of a traditional bell with a high powered VID.

FEATURES

- Quick to install bell/beacon combination
- Terminals can be isolated for use as a two stage alarm
- Bright LED.



VAD23 - CEILING MOUNTED BEACON

A high intensity ceiling-mounted Visual Alarm Device; the unit is ideal for providing a primary warning signal in areas where sounders alone will not be sufficient. The VAD23 - Ceiling Mounted Beacon is third party approved to EN 54-23, and certified to the rating of C-3-7.5.



FEATURES

- Bright EN 54 Part 23 VAD
- Detector-style bayonet fitting for speed of installation

EN 54-23

EN 54 APPROVED LOOP SOUNDER SYSTEM BASE SOUNDER

LPCB approved to EN 54-3, EN 54-17 and EN 54-18. Our Loop Sounder System greatly increases the reliability of the sounder circuits and in many cases results in a saving in the amount of cable used in field wiring.

Each loop can accommodate up to 45 sounders. Suitable for use on both conventional and addressable fire alarm systems, the system provides much greater protection against faults than the 'dual radial' circuit arrangements commonly used.



FEATURES

- Enhanced sounder circuit integrity and reliability
- Compliant with EN 54 and BS 5839-1
- Certified by LPCB to EN 54 Part 17 & 18
- 45 sounders per loop



EN 54-3

EN 54-17

EN 54-18





ALARM INDICATOR BUZZER UNIT

The Vimpex BZ1L is an indicator with sounder unit. It is designed to be connected to a conventional sounder circuit or strobe circuit from a control panel.

FEATURES

- 'European' styling
- Large, visible LED for fire alarm applications
- Push through cable gland for speedy install
- AFNOR approved for use in France



Ani-Mate®

ANI-MATE® ANIMAL FRIENDLY SOUNDERS

An animal friendly sounder that uses a specifically developed low frequency tone (sub 400 Hz), which is designed to minimise discomfort to animals but still able to be heard by humans. The Ani-Mate is designed to be used as a 'silent' fire alarm.

FEATURES

- Sub 400 Hz frequency designed to minimise distress to animals
- 24 V dc operation means easy interface to existing systems
- Weatherproof version available
- Wide volume control - 89 to 103 dB(A)
- Animate® 'Silent Alarm' - Compliance with the Home Office CoP (KP)

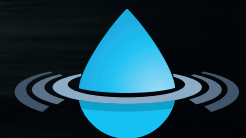


HYDROSENSE™

The most sophisticated configurable water leak detection system on the market.

Protect your assets from the greatest risk to buildings and managed systems: Water. The only way to mitigate the risk of water damage is to continuously monitor for water leaks. The risk assessment of water damage and the installation of Water Leak Detection Systems are increasingly being recommended by commercial insurers and is often a requirement for full cover.

Hydrosense™ systems deliver a new standard in Water Leak Detection. Unlike other systems, Hydrosense™ is fully customisable and configurable allowing connection to Building Management Systems (BMS) and a wealth of other vital supporting systems. Hydrosense™ continuously monitors for water leaks, protecting a company's building and assets year in year out.



hydrosense™



HYDROSENSE CONVENTIONAL - HS

FEATURES

- Fully monitored circuits
- Robust junction and connection boxes
- Simple to install and maintain
- Linear detection - Hydrowire offers enhanced durability and flexibility
- Point detection - Probes include enhanced aesthetics and a robust detection method
- Common Fault and Alarm relay contacts available
- 'Plug and Play' installation - connection and termination even simpler via unique plug and socket arrangement
- GSM Dialler option for SMS alerts

HYDROSENSE ADDRESSABLE - ID

FEATURES

- Single and dual loop control panels
- Supports up to 254 point detection probes, and 25,400 m of Hydrowire
- Customisable LED display, allowing each device to be given a unique address
- Relays to control water shut off valves and other plant and equipment - 8-way relay board also available
- RS845 data bus capable of supporting up to 32 expander cards
- 230 V relay unit available
- Sophisticated protocol allows for complex system design
- Reduced installation time and cable use



REMOTE MONITORING AND NOTIFICATION DEVICES

The ANC0023 is a quad-band GSM relay board and auto-dialler. The unit can be used as a general purpose call/SMS activated relay. This allows for swift alerts at the point of a leak detection.

VIZULINX - Alarm Management Module for event notification via email, SMS and Modbus using an IP connection.

SIGNALINE

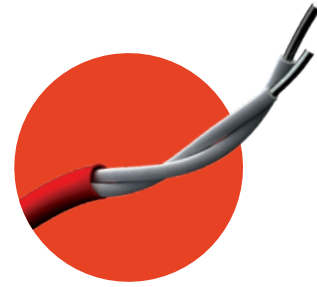
Linear heat detection provides early detection of fire conditions or overheating of equipment, plant or the surrounding area. Signaline cable senses heat anywhere along its length and is designed to be used in commercial and industrial applications.

A versatile heat detection solution with large coverage and a small profile. Signaline HEAT carries international approvals and is ideal for various industrial and commercial buildings.

SIGNALINE LINEAR HEAT DETECTION

Heat sensing cables can be used with, or in place of conventional heat detectors. They can also be used where conventional heat detection may be cost-prohibitive or difficult to install and maintain.

- ✓ Highly cost effective form of detection
- ✓ Easily installed
- ✓ Maintenance free
- ✓ Can be used in hazardous areas and dusty or harsh environments down to -40°C



Fixed Temperature
Signaline FT

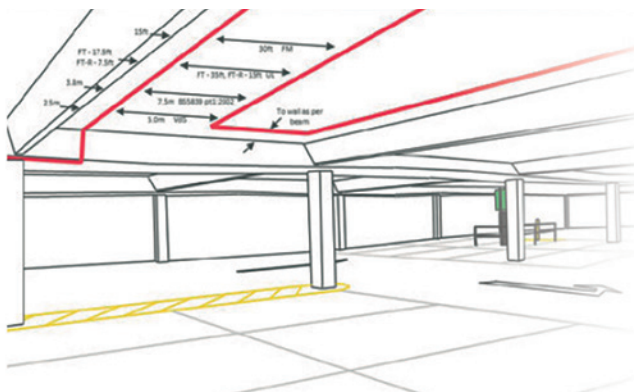


LocatorPlus
* Monitors 2 Zones up to 3Km each
* Independent or Interlocking Modes
* Two wire RS-485 Modbus RTU



APPLICATIONS

- | | |
|--------------------------|-----------------------------------|
| → Cable Trays | → Warehouses |
| → Plant Rooms | → Waste Recycling Facilities |
| → Vehicles | → Process Plants & Power Stations |
| → Multi Storey Car Parks | → Hazardous Areas |
| → Industrial Kitchens | → Shipping & Marine |



It is important to detect a fire in a car park full of valuable vehicles. Catching it early can prevent thousands of pounds worth of damage.



SMART+GUARD

Misuse of manual call points or pull stations is a very significant factor in false or nuisance alarms. Manufactured in the UK by Vimpex, Smart+Guard products assist in reducing malicious or accidental use of fire and security system components.

BS 5839 - The British Standard for fire alarm installations recommends the use of manual call point covers in vulnerable areas to mitigate against false alarm. Our Smart+Guard products, when fitted, immediately start working to reduce the risk of false alarms.

SMART+GUARD PROTECTIVE CALL POINT COVERS

Smart+Guard products are designed to protect essential fire and security equipment and can reduce malicious or accidental false alarms.

Manufactured by VimpeX, Smart+Guard is a tough polycarbonate hinged protective cover that can easily be installed over call points and emergency switches to provide protection from vandalism, accidental damage or misuse.

The red variant is commonly installed over fire alarm break glass call points to protect the break glass from deliberate misuse or accidental damage. This reduces the incidents of false fire alarms.



FEATURES

- Designed for ease of installation - can be fitted in minutes
- Optional battery powered 90dB alarm, increasing security and protection
- Break seal also available to increase visible deterrent against misuse
- Available in 5 colours: red, green, yellow, blue and white



COLOURS AVAILABLE:



SMART+GUARD 2

Sharing all of the features of the Smart+Guard, this product is designed to protect German style Call Points, Weatherproof Call Points and most US style Pull Stations.



SMART+GUARD ENVIRO

The Smart+Guard Enviro has been designed and engineered to provide protection for devices used in hostile environments.

Applications include offshore, the food and beverage industry, swimming pools, leisure centres, and underground installations.

FEATURES

- Fully sealed enclosure to 'weatherproof' internal call points
- Provided with all mounting accessories for effective installation
- Available with and without integrated siren



SMART+CAGE

Smart+Cage protects essential Fire, Safety and Security equipment from theft, vandalism or accidental damage.

Constructed from PVC coated 4mm steel bar, these tough, waterproof cages provide security for a wide range of devices.

Multiple size options are available.
 Certain Smart+Cages are certified for UK prison use.

FEATURES

- Protects smoke detectors, clocks, fire alarm bells etc. from damage
- Thick gauge wiring for maximum strength and durability
- Certified for UK prison use



SMART+GUARD BACK BOX

The Smart+Guard Back Box is designed to give greater protection from rain and water ingress when used with the Smart+Guard flush mount products.

FEATURES

- Designed to enclose most EN 54-11 approved call points and emergency switches
- Greater protection from water and dust
- 2 Knockouts for 20 mm conduit
- Available in Red or Clear





SYCALL RESET-GLOW MANUAL CALL POINT RANGE

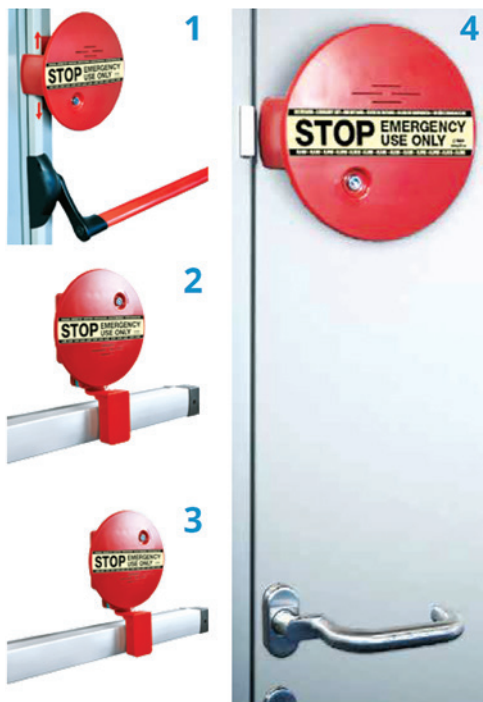
Vimpex's Resettable Call Point mimics the look and feel of glass. By using an ingenious patented mechanism, it enables call points to be properly tested every time with minimum hassle.

FEATURES

- Positive activation mimics the feel of breaking glass
- Visible warning flag confirms activation - a real test every time!
- Optional LED back light illuminates break glass area when call point is activated
- Weatherproof version available
- Available in five colours



EN 54-11



Four different solutions, to secure emergency exits in seconds.

SMART+SHIELD

Smart+Shield products offer a simple and cost-effective way to discourage the misuse of emergency exit doors, or even windows. Adopting the universally recognised word "STOP" on a bright red background, the Smart+Shield is a visually effective deterrent. If activated, a loud noticeable security alarm of 95 dB(A) signals that the exit door has been opened.

FEATURES

- Protects doors and windows from unauthorised use
- Several mounting methods to suit different door furniture
- Can only be deactivated with special Smart+Shield key

HAZARDOUS AREA

Design and installation of equipment for use in hazardous areas is a specialist field requiring specialist knowledge. By using Vimpex's Hazardous Area products, designers and installers can be confident that they are using high quality products from established suppliers.





IS28 MK.6

Featuring 32 high and low frequency tones to suit a wide range of applications. ATEX and IECEx approved for use in Zones 0 and 20 (Gas and Dust) and is also certified as suitable for use in Zones 1, 2, 21 and 22. The product should only be connected to the fire alarm system via an approved galvanic isolator or zener barrier. These devices are available from Vimpex along with a suitable enclosure.

FEATURES

- Compatible with other Banshee Excel products
- 32 user-selectable tones
- Suitable for Zones 0, 1, 2, 20, 21 and 22



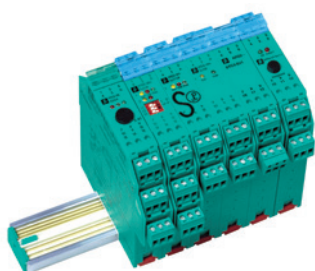
IS FLASHDOME

The IS FlashDome is an intrinsically safe beacon for use in hazardous areas. Certified to ATEX and IEC Ex, the IS FlashDome is designed for use in Zones 0, 1 & 2.

In order to be intrinsically safe, the IS FlashDome must be powered via an approved 28 V 300 Ω zener barrier or galvanic isolator. Suitable barriers and isolators are available from Vimpex - see below.

FEATURES

- Uses same mounting methods as other Excel product
- Must be used with Vimpex supplied barriers or isolators



BARRIERS & ISOLATORS

DIN rail mounted galvanic isolators and zener barriers for use with both the IS28 Mk.6 sounder and the IS FlashDome beacon are available from Vimpex.

E2S HAZARDOUS AREA EQUIPMENT

Vimpex is a trusted and important partner to E2S Warning Signals. Using our high levels of technical support, customer service and business ethos to bring E2S products to the fire and evacuation market.

The E2S range is extensive and incorporates general sounders and beacons, high output industrial units and specialist product for offshore, hazardous areas and explosive environments.





E2S BEX COMBINATION SIGNALS

Corrosion proof, marine grade copper free enclosure with a choice of LED or Xenon beacon. Single or dual beacons with user selectable flash patterns.

FEATURES

- Audible/visual signal from one combined unit
- Xenon and LED technologies available
- Suitable for use in Ex Zones 1, 2, 21 and 22



E2S BEXCP3A / BEXCP3B CALL POINTS

Break Glass Manual Call Points with a corrosion proof, marine grade copper free enclosure.

FEATURES

- Available with and without monitoring resistors
- Fully certified to ATEX and IECEx standards



E2S GNEXCP6A / GNEXCP6B CALL POINTS

Manual call points available as break glass, push button or tool reset options in a GRP enclosure.

FEATURES

- Break glass, push button or resettable versions available
- Approved for Ex Zones 1, 2, 21 and 22

E2S GNEX VISUAL SIGNALS

Highly configurable, visual signalling alarm devices with a sturdy GRP enclosure. These high output strobes are used in areas requiring very bright flashes over a wide area.

FEATURES

- Up to 902 Candela light output
- Choice of 10, 15 and 21 Joule versions
- Design features reduce installation time

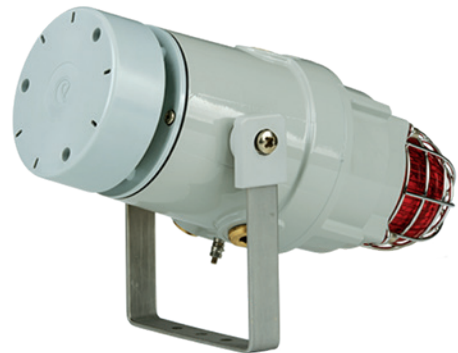


E2S D1X COMBINATION SIGNALS

Combined audible and visual indication in one unit. Xenon strobes are twinned with either flared alarm horns or radial designs.

FEATURES

- 5 or 10 Joule light output
- Seven different lens colour options
- 117 - 125 dBA SPL



IS MINI-SERIES - INTRINSICALLY SAFE SOUNDERS AND BEACONS

The IS-Mini Series consists of a range of compact sounders, LED beacons and combined sounder/beacons. They are suitable for all IS signalling applications including fire, security and process control.





SYSTEM ANCILLARIES

Vimpex manufacture a wide range of Fire Detection, Alarm and Building Infrastructure System Accessories.

Our Identifire Accessories are compatible with all conventional fire alarm systems and can be customised, branded or OEM manufactured to suit any system. They use the same mounting method as the rest of the Identifire range meaning consistency and commonality throughout.

All System Accessories, whether Vimpex-manufactured or supplied by our trusted partners, are available ex-stock for immediate delivery.



WIRED DOOR HOLDERS

Vimpex is one of the largest distributors of electromagnetic door holders in the UK. Mounted onto a fixed surface, these door holders ensure retention of the fire door by means of a smart metallic keeper plate. Interfaced with the fire alarm system, the door holders are de-energised as soon as the fire is detected, thus releasing the door without the potentially harmful delay suffered by other types of devices.

An extensive range of door holders available in both metal and plastic enclosures.

FEATURES

- Metal and ABS versions available
- Range of accessories and mounting methods
- Always available ex-stock for immediate delivery

EN 1155



WIRELESS ACOUSTIC DOOR HOLDER

This wireless battery-powered magnetic Door Holder is triggered acoustically when fire alarm sounders are activated. No external wiring is required with battery life in excess of 12 months with 2 standard 'C' cells.

FEATURES

- Uses fire alarm signal to release door
- Quick, wire-free installation for retrofit applications
- Professional wire-free installation with no risk of damage to existing decor



ENERSYS BATTERIES

The Genesis NP battery range leads the way in battery quality and reliability. Developed by world leading manufacturer Energys, the Genesis NP series is the culmination of more than 100 years of battery manufacturing experience.

FEATURES

- Available range from 1.2 Ah to 38 Ah
- Expected life span of 3 to 5 years in float service applications
- More than 1,000 discharge/recharge cycles depending on the average depth of discharge
- Recovery capabilities even after deep discharges
- Can be operated in a broad range of ambient temperatures



We are upgrading our power supply range! Look out for a refreshed range coming soon.

VPSU SERIES – GENERAL PURPOSE POWER SUPPLIES

The Vimpex range of low cost general purpose boxed PSUs are suitable for use with our wide range of BS EN 1155 approved Door Holders and other 24 V dc devices. Three boxed 24 V dc general purpose power supplies are available: 1 A, 2 A and 3 A.

FEATURES

- Available as 1, 2 or 3 Amp versions
- Competitively priced, quality units
- Ideal for door holder and other system ancillary products

IDENTIFIRE SERIES - EN 54-4 POWER SUPPLY/CHARGER

The Identifire series of EN 54-4 approved switched-mode power supplies has intelligent on-demand load sharing capability to provide exceptional flexibility. This allows rapid large capacity battery charging with either extended standby hold-up duration at light loads, or short high current peak loads where spare output capacity is diverted to battery charging.

FEATURES

- Approved to EN 54 Part 4
- High quality enclosures
- Reliable power
- Advanced features aid engineers and system designers
- Use of engineer's tool a significant advantage in service



We are upgrading our power supply range! Look out for a refreshed range coming soon.



EN 54-4

ENGINEER'S TOOL

This handy tool allows the installer to monitor the performance of the power supply, system currents and voltages, the condition of batteries and to log PSU events and faults. It can also be used to calibrate and test power supplies.

FEATURES

- Aids service reporting
- Monitors battery and charging performance
- Enhances benefits of Identifire Power Supplies



IDENTIFIRE MAINS ISOLATOR SWITCH

As recommended in BS 5839-1 and applied as best practice world-wide, our Mains Isolator Switch is consistent with the rest of the Identifire range. Mains isolators are often installed in dark or restricted areas. A bright status LED is therefore vital.

FEATURES

- Rated at a true 8 Amp switch rating
- Key can be removed in any state
- '901' durable and proven engineers key switch
- Bright LEDs for clear status signal in dark environments



GSM DIALLER

The ANC0023 is a quad-band GSM relay board and auto-dialler. It offers Open-on-Call access control with Text Alert and Auto-Dial for GSM850MHz, GSM900MHz, DCS1800MHz and PCS1900MHz. The unit has been primarily designed for security applications although can be used as a general purpose call/SMS activated relay.

- ✓ Ideal for use with [Hydrosense Water Leak Detection systems](#).



Vimpex LTD

Star Lane, Great Wakering,
Essex SS3 0PJ, UK

t: +44 (0) 1702 216999
e: sales@vimpex.co.uk

www.vimpex.co.uk

Vimpex Interguard AB

t: (0) 36 37 10 65
e: sales@vimpex.se

www.vimpex.se



Quality System Certificate No. 456
Assessed to ISO 9001



Fire Industry Association
BR/3700070/ISS 27

We reserve the right to change or amend any design or specification in line with our policy of continuing development and improvement.